

# The Alabaster Jar

A MOVIE  
PITCH DECK  
BY  
MATT RISK



# LOGLINE

Hanna travels from Cairo to Montreal to choose between attending law school, as her father insists, or art school, to follow in her dead mother's footsteps.

Soon after arriving she begins to have hallucinations of a cat-headed goddess attended by worms.

These hallucinations lead her on a journey of self-discovery that ends in blood as she uncovers a human trafficking ring and the horrible source of her visions.



# SYNOPSIS

IN HER FAMILY HOME IN CAIRO, HANNA IS PACKS HER BAGS TO LEAVE FOR SCHOOL IN CANADA. HER FATHER WANTS HER TO GO TO LAW SCHOOL, BUT SHE WANTS TO FOLLOW HER MOTHER'S PATH INTO BEING A PAINTER.

SHE BIDS HER FATHER FAREWELL AT THE AIRPORT AND FLIES OFF TO HER DESTINY. ON THE PLANE, SHE CHATS WITH CAMILLE, A WOMAN WITH AN ULTERIOR MOTIVE.

UPON ARRIVAL IN CANADA, HANNA DISCOVERS SHE HAS LOST THE NOTE WITH HER COUSIN'S CONTACT INFORMATION, AND ACCEPTS CAMILLE'S OFFER OF A PLACE TO STAY.

CAMILLE INSISTS SHE JOIN HER AT A MEDITATION RETREAT STARTING THE NEXT DAY.

DURING THE NIGHT, HANNA IS STRICKEN WITH A BOUT OF SLEEP PARALYSIS EXPERIENCING VISIONS OF A CAT-HEADED GODDESS, BS'ST, WHO TELLS HER TO 'GO FORTH BY DAY'.

AT THE MEDITATION CENTRE, HANNA IS IMMEDIATELY ATTRACTED TO SETH FRANKLIN, A CHARMING RAKE WHO RUNS SOME OF THE PROGRAMS AT THE CENTRE.

SETH INVITES HANNA AND CAMILLE TO HIS HOUSE FOR DINNER. AFTER A SINGLE COCKTAIL, HANNA LOSES MOTOR CONTROL AND THE OTHERS PUT HER TO BED BEFORE HOOKING UP THEMSELVES.

SHE STARTS TO LOSE CONTROL, AND AFTER A NIGHT OF DEBAUCHERY AND SEXUAL LICENTIOUSNESS WITH BOTH CAMILLE AND SETH, SHE WAKES TO DISCOVER THAT CAMILLE HAS BEEN MURDERED.

SHE MUMMIFIES HER FRIEND BEFORE DONNING A CAT MASK AND GOING ON A QUEST FOR VENGEANCE.

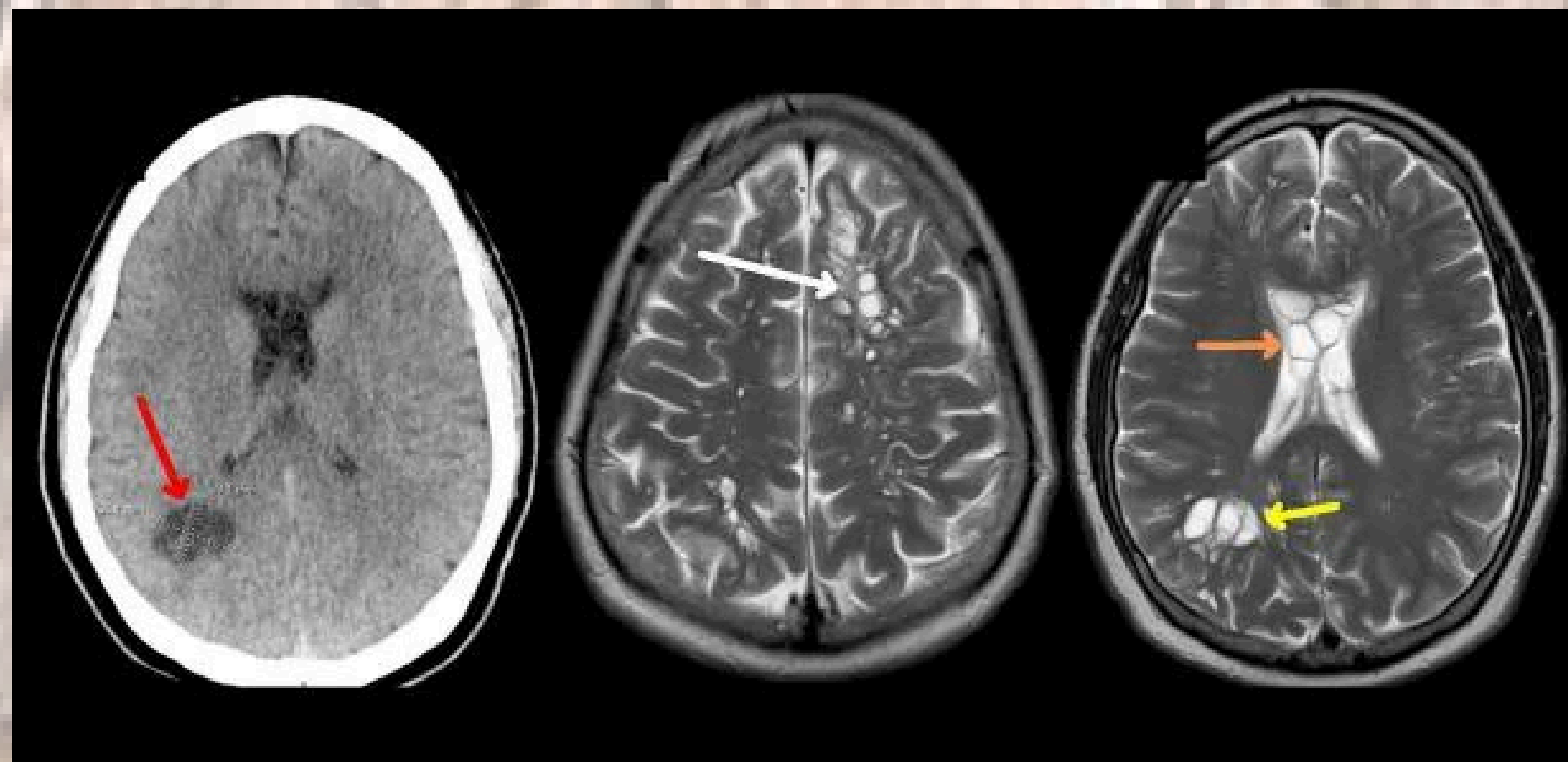
SHE FINDS SETH DISCUSSING CAMILLE'S MURDER WITH CATHERINE, SHE STALKS HIM HOME WHERE SHE DISCOVERS SECRET ROOMS WHERE WOMEN ARE BEING KEPT IN CAGES. SHE FAILS TO KILL HIM BEFORE THE POLICE ARRIVE, TAKING HER TO THE HOSPITAL FOR HER WOUNDS. IN HOSPITAL, SHE HAS AN MRI WHICH REVEALS A CYST IN HER TEMPORAL LOBE: THE SOURCE OF HER VISIONS.

SHE ESCAPES, POISONS SETH, AND CONFRONTS CATHERINE AT THE TEMPLE. AFTER A DESPERATE STRUGGLE, SHE KILLS CATHERINE, DESTROYING THE TEMPLE WITH FIRE.

SHE RETURNS TO HER HOSPITAL ROOM, UNDERGOES SURGERY FOR HER CONDITION: DURING WHICH THE SURGEON DISCOVERS A TAPEWORM LARVAE IN THE CORE OF THE CYST.

AFTER HER RECOVERY, SHE BECOME A PAINTER. SHE PAINTS ICONS OF BS'ST WREATHED IN GOLD LEAF.

# CHARACTERS



THE ALABASTER JAR



# HANNA MANSOUR

After her mother's suicide, Hanna has been living under the thumb of her father, Danyall. She inherited her artistic temperament from her mother, but has had to keep it hidden from Danyall, who fears any indulgence in creative arts would lead to the same depression that her mother suffered from.

She knows what she wants, but doesn't believe it is possible. Maybe that's why she's decided to do school in Canada: to get away from her father and figure out for herself what she wants to do with her life. But there is something going on under the surface, something germinating in her shadow, waiting to push her into compulsion and beyond.



# BS'ST

The eyeless cat-headed pseudo-deity that comes to Hanna in her seizures.

She is attended by two worms, who play the role of her fractal-tongued servitors. She is wisdom and vengeance, and the gatekeeper of the dark world.

By initiating Hanna into her world, she starts her on her journey into the afterlife, or maybe she's merely a hallucination brought on by the tapeworm larva burrowing into Hanna's temporal lobe.





# CAMILLE MORIN

Camille's life was taking a bad turn when she met Catherine Mantel. An abusive home life saw her hit the streets at 17, and the needle soon after that.

Catherine Mantel found her and took her in, first grooming her for their illegal activities, then deciding she was too rebellious to serve their needs. Instead, Catherine turned her into a recruiter, seeking vulnerable young women to seduce into their web.

Camille is growing sick of it, but they have too much on her for her to cut and run.

But lately, she's become a liability.

# SETH FRANKLIN

Charming, disarming, and utterly corrupt, Seth Franklin lives mostly for the benefit of Seth Franklin.

In Catherine Mantel, he found a perfect mentor. Someone to teach him the ropes and the ins and outs of the illicit trade in human flesh.

He saw in the Meditation Center a perfect smorgasbord of prey to pick from, groom, and lure into his twisted games.

Behind his charm is a cold-hearted sociopath who will do anything to cover his tracks.







# CATHERINE MANTEL

After getting her first break as a minor star in Hollywood, she met some of the wrong people, who introduced her to a certain billionaire 'playboy' who's private island in the Caribbean proved a perfect party spot.. perfect for everyone but the 'service' staff.

Rubbing elbows with politicians and celebrities, she got a taste for the kind of money and power running in those circles granted.

Her talents as an orator and hypnotist marked her as a perfect cult leader, and when she started promising a steady supply of young blood for the mill, she found it all too easy to find funding for her Meditation Center.



# DANYALL MANSOUR

Danyall has had a hard time raising Hannah after her mother's suicide. His grief turned him to the church, and his fear turned him against his wife's legacy.

He has tried his best to steer Hannah away from her artistic indulgences, but his terror that he'll lose her to the same madness that claimed her mother makes him favour the stick over the carrot.

His firmness comes from knowing that the father's role in his daughter's life is to guide her towards a better life than he has had. Unfortunately, that means cutting her off from the fount of artistic talent she's inherited from her mother's side.





# FILM TONE

A psychological tale of an unravelling mind with body horror and slasher elements, it's 'Spider' meets 'Jennifer's Body'.

# AUDIENCE

## FOR LOVERS OF ELEVATED HORROR

“The Alabaster Jar” will resonate deeply with fans of psychological horror who appreciate a symphony of emotions, narrative depth, youthful rebellion, and body horror.

Ideal for those who have lived in repressive households, craved an artistic life, or those who’s appreciation for horror goes beyond mindless slasher films, and jump scares.



# WHY NOW?

The idea for the Alabaster Jar came to me after hearing a story about a young man who had a temporal lobe seizure in church and ended up with a belief that he was being possessed by devils. This, combined with the idea of epilepsy being brought on by tapeworm larvae burrowing into the brain created the initial concept and horror of the script.

We are living in a time where people are being exploited by their spiritual beliefs, leading to personal and political tragedies for themselves, and for society as a whole. On one hand, Hanna's journey is one of overcoming the repression of her father's fear and how that has shaped and muted the expression of her own personal will. On the other, people in her life see her as someone to exploit and make use of. She is the host of multiple parasites. In order to overcome them, she has to come to understand the truth of her own identity by standing up to those who would exploit her for their own gain: something all of society could use at this point in history.

**CONTACT ME**  
Matt Risk

# THANK YOU

**MOBILE**

1+514-623-5773

**EMAIL**

MATT.RISK@GMAIL.COM

